

Prepared on: 15/03/2018

This Product Highlights Sheet (“**PHS**”) is an important document.

- It highlights the key terms and risks of this investment product and complements the prospectus of the Fund dated 15 March 2018 (the “**Prospectus**”) ¹.
- It is important to read the Prospectus before deciding whether to purchase units in the Fund. If you do not have a copy, please contact us to ask for one.
- You should not invest in the Fund if you do not understand it or are not comfortable with the accompanying risks.
- If you wish to purchase the units in the Fund, you will need to make an application in the manner set out in the Prospectus. Units of the Fund can also be purchased or traded on the SGX-ST as set out in the Prospectus.

LYXOR MSCI EMERGING MARKETS UCITS ETF (the “**Fund**”)

SGX counter name (SGX stock code)	Lyxor EM Mkt US\$ (H1N)	SGX-ST Listing Date	12 May 2009
Product Type	Exchange Traded Fund	Designated Market Maker	Société Générale
Management Company	Lyxor International Asset Management (the “ Manager ”)	Underlying Reference Asset	MSCI EMERGING MARKETS™ Net Total Return index, denominated in USD (the “ Benchmark Index ”)
Traded Currency	Class C-USD: USD	Expense Ratio (as at 31 July 2017)	0.55% (Class C-USD units)

PRODUCT SUITABILITY

WHO IS THE PRODUCT SUITABLE FOR?

- The Fund is only suitable for investors who:
 - want capital growth rather than regular income;
 - are prepared to lose some or all of their original investment;
 - seek exposure to the emerging equity markets; and
 - have considered their personal circumstances at present and for the next five years and are able and willing to invest in a product:
 - for the minimum recommended investment period of more than five years;
 - which has a high equity risk profile and exposure to, amongst others, market risks linked to movements (including declines) in the Benchmark Index;
 - **which net asset value (“NAV”) may have a high volatility due to the potential volatility of the Benchmark Index; and**
 - **which will invest in financial derivative instruments such as swap transactions for investment, hedging and/or efficient portfolio management.**

Please refer to the “Risks of Investing in the Fund”, “Investment Objective, Focus & Approach”, “Risks”, “Other Material Information - Distributions” sections and “Appendix 1: Benchmark Index” of the Prospectus for further information.

KEY PRODUCT FEATURES

WHAT ARE YOU INVESTING IN?

- You are investing in Class C-USD units (the “Units”) of the Fund, which is an exchange traded fund constituted in France and is an Undertaking for Collective Investments in Transferable Securities (“UCITS”) V scheme that aims to track the Benchmark Index by using a synthetic replication strategy (please see the “Investment Strategy” section below for further details).
- The Benchmark Index is an equity index calculated and published by international index provider MSCI. The Benchmark Index comprises solely emerging markets stocks and boasts the fundamental characteristics of MSCI indices. The Benchmark Index reflects 85% of the entire market capitalisation of the emerging equity markets, while also mirroring the markets' economic diversity. The index components are reviewed quarterly by the MSCI in order to take into account changes affecting a stock market capitalisation (number of stocks and free float) or its classification by sector.
- The Manager reserves the right to distribute and/or capitalise all or part of the income of the Fund. As at the date of the Prospectus, in respect of the Units, the Manager intends to capitalise income of the Fund and not make any distributions.

Please refer to the “Basic Information”, “Investment Objective, Focus & Approach”, “Other Material Information – Distributions” sections and “Appendix 1: Benchmark Index” of the Prospectus for further information.

Investment Strategy

- The Fund may:
 - (i) purchase or invest in a basket of international shares from all economic sectors and listed on any exchange including small capitalisation markets which may or

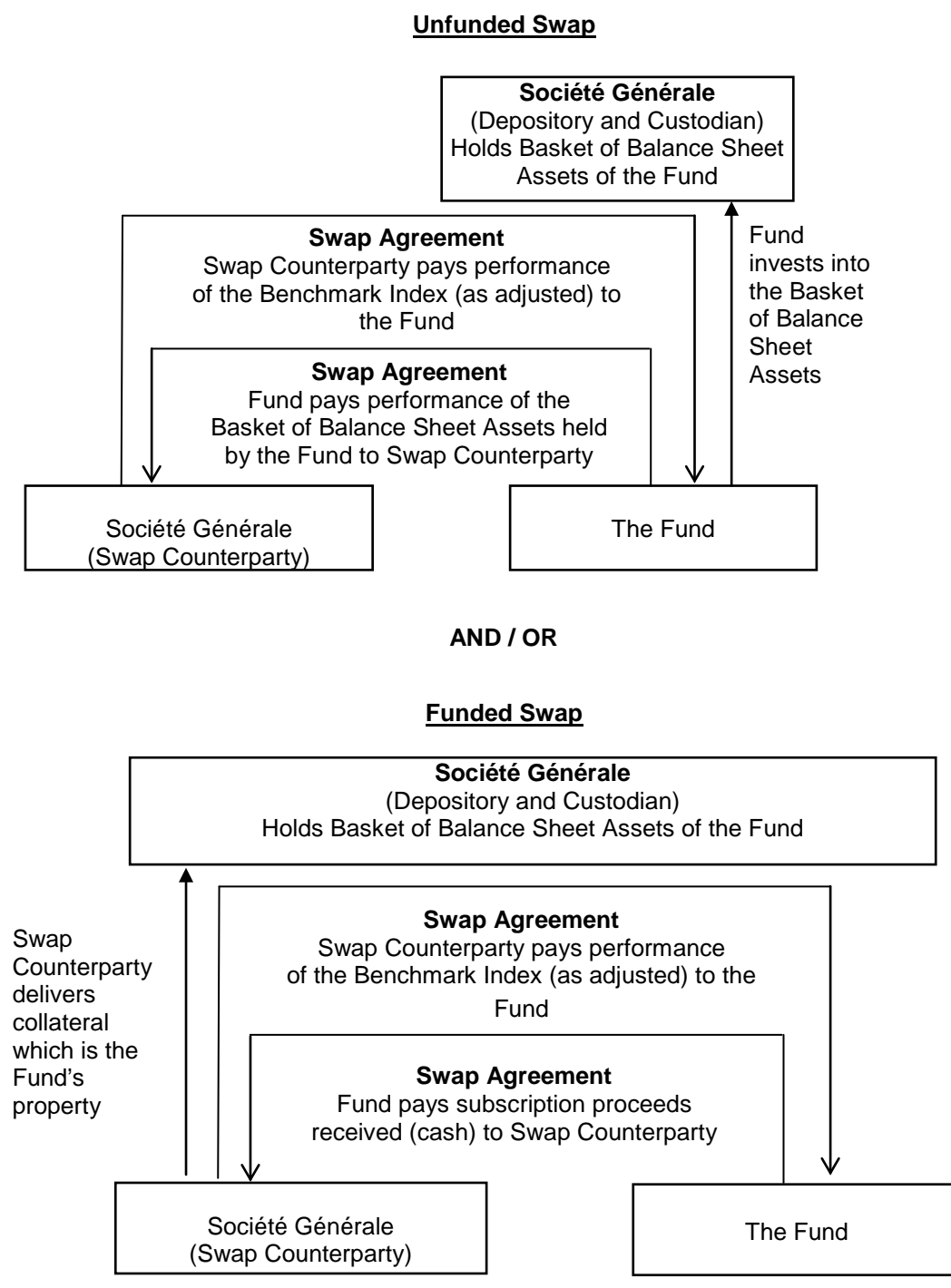
Please refer to the “Investment Objective, Focus

¹ The Prospectus is accessible at www.lyxoretf.com.sg. You may also obtain a copy of the Prospectus from the Singapore Representative of the Fund, whose details can be found on the last page of this PHS. Unless the context otherwise requires, terms defined in the Prospectus shall have the same meaning when used in this PHS.

may not comprise shares that make up the Benchmark Index, and where the Manager in its discretion considers appropriate, one or more underlying fund(s) (collectively the “Basket of Balance Sheet Assets”), and enter into financial derivative instruments negotiated over-the-counter known as swap agreement(s) (the “Unfunded Swaps”) with Société Générale as the current swap counterparty which would essentially exchange the Fund’s exposure to the Basket of Balance Sheet Assets (and where applicable any other assets of the Fund) with that of Benchmark Index securities (as adjusted²) (the “Unfunded Swap portion”); and/or

- (ii) invest in financial derivative instruments negotiated over-the-counter known as funded swap agreements (the “Funded Swaps”) with Société Générale as the current swap counterparty. The Funded Swaps would essentially exchange the Fund’s proceeds against the performance of Benchmark Index securities (as adjusted³). Suitable collateralisation arrangements in relation to the Funded Swaps will be entered into with the swap counterparty(ies) to reduce the percentage of the counterparty risk exposure to the swap counterparty(ies) (the “Funded Swap portion”).

- The investment strategy of the Fund is illustrated in the diagram below:



& Approach” section of the Prospectus for further information.

² Please refer to Paragraph 7.2(i) of the Prospectus for further information on such adjustments.

³ Please refer to Paragraph 7.2(ii) of the Prospectus for further information on such adjustments.

<ul style="list-style-type: none"> • The portion of the swap to be unfunded and the portion to be funded will be decided by the Manager at its discretion and in such proportion as it may consider appropriate from time to time. • Criteria for selection of shares and collateral: Shares comprising the basket of international shares in the Basket of Balance Sheet Assets under the Unfunded Swap portion and collateral under the Funded Swap portion will be selected based on prescribed eligibility and diversification criteria. Please refer to Paragraphs 7.2 and 7.3 of the Prospectus for further information. • The Manager may decide to adopt another investment strategy as it believes appropriate to achieve the investment objective of the Fund, subject to applicable laws and regulations. 	
Parties Involved	
<p>WHO ARE YOU INVESTING WITH?</p> <ul style="list-style-type: none"> • The Fund is established in France as a <i>fonds commun de placement</i> (FCP) which is an open-ended collective investment fund. • The Manager of the Fund is Lyxor International Asset Management, a company incorporated in France. • The current swap counterparty, designated market maker, depository and custodian, registrar and administrative agent of the Fund is Société Générale, an institution established in France. • The Singapore Representative of the Fund is RBC Investor Services Trust Singapore Limited, a company incorporated in Singapore. 	<p>Please refer to the “The Manager” and “Other Parties” sections of the Prospectus for further information on the role and responsibilities of these entities.</p>
KEY RISKS	
<p>WHAT ARE THE KEY RISKS OF THIS INVESTMENT?</p> <p>The value of the Units and the price of the Units (and its dividends, if any) may rise or fall. These risk factors may cause you to lose some or all of your investment:</p>	<p>Please refer to the “Risks” section of the Prospectus for further information.</p>
Market and Credit Risks	
<ul style="list-style-type: none"> • Market prices for the Units may be different from their NAV <ul style="list-style-type: none"> ○ Units are transacted on the SGX-ST on a willing-buyer-willing-seller basis at market prices throughout the trading day. ○ The price of any Units traded on the SGX-ST will depend, amongst other things, on market supply and demand, movements in the value of the Benchmark Index, prevailing financial market, corporate, economic and political conditions. ○ As market prices of Units may sometimes trade above or below the NAV of the Fund, there is a risk that you may not be able to buy or sell at a price close to the NAV. • You are exposed to risk linked to the countries in which the Fund invests or is exposed to <ul style="list-style-type: none"> ○ Investment of the Fund in emerging markets or its exposure to those markets mean that the NAV of the Fund and its trading prices will be affected by movements or downturns in those markets. ○ Exposure to emerging markets may entail a greater risk of potential loss than investments or exposure to developed markets. 	
Liquidity Risks	
<ul style="list-style-type: none"> • Units can be redeemed at NAV only through Participating Dealers <ul style="list-style-type: none"> ○ If you wish to redeem your Units at NAV, you must approach a Participating Dealer to apply to the Manager to redeem the Units on your behalf. If you approach a broker or dealer who is not a Participating Dealer, that broker or dealer will have to place redemption orders through a Participating Dealer. In such a case there may be additional charges. ○ There is a minimum amount of EUR 100,000 for redemption of Units in cash being imposed by the Fund on a Participating Dealer. • The secondary market may be illiquid <ul style="list-style-type: none"> ○ You can sell your Units on the SGX-ST. However, you may not be able to find a buyer on the SGX-ST when you wish to sell your Units. While the Fund intends to appoint at least one market maker to assist in creating liquidity for investors, liquidity is not guaranteed and trading of Units on the SGX-ST may be suspended in various situations. ○ If the Units are delisted from the SGX-ST or if the CDP is no longer able to act as the depository for the Units listed on the SGX-ST, the Units in your securities accounts with the CDP or held by the CDP may be repurchased (compulsorily or otherwise) by the designated Market Maker or otherwise at a price calculated by reference to the NAV of the Fund calculated as of a certain number of day(s) following the last trading day of the Fund on the SGX-ST (or such other day as may be determined by the Manager in 	

consultation with the SGX-ST and/or the CDP).

Product-Specific Risks

- **You are exposed to counterparty risk related to the swap agreement(s) entered into by the Fund and risks relating to swap agreement(s)**
 - The Fund currently enters into swap agreement(s) with a swap counterparty. There is a risk that the swap counterparty may default on its obligations under the swap agreement(s) which may cause the Fund to incur significant losses. However the Fund is subject to a maximum single counterparty risk exposure of 10% of its NAV per counterparty under the UCITS directive.
 - If the swap counterparty defaults on its obligations, the NAV of the Fund may be adversely affected by fluctuations in the Basket of Balance Sheet Assets (which may not comprise shares that make up the Benchmark Index) during the period where an alternative swap counterparty is being sought for the Fund.
 - There may be a risk that the realised value of any collateral due to the Fund under the funded swap agreements may not be sufficient to cap the loss suffered by the Fund to 10% of the Fund's NAV (being the single counterparty risk exposure limit referred to above).
 - There is also a possibility that the swap transactions may be terminated under certain circumstances.
- **You are exposed to foreign exchange risk and currency risk**
 - *Currency risk related to the Fund and the Benchmark Index:* The NAV of the Fund could decrease while the value of the Benchmark Index increases due to exchange rate fluctuations in the Emerging Currencies (as defined in the Prospectus and being the currencies of the shares underlying the Benchmark Index) and the USD (being the currency in which the NAV of the Units is denominated and the SGX-ST listing currency of the Units).
 - If your functional currency is in SGD, you will be exposed to further foreign exchange risks on your investment in the Fund.
- **The Fund, Manager, Depository and Custodian and the current swap counterparty are not constituted in Singapore and are governed by foreign laws. Certain investments by the Fund such as the swap(s) are also governed by foreign laws**
 - As a FCP in France registered as a UCITS V scheme, the Fund is subject to the applicable laws and regulations in France and the relevant UCITS directives.
 - The Manager, Depository and Custodian and the current swap counterparty are established in France and governed by French laws. Any winding up of the investments of the Fund including the swap agreement(s) which are governed by foreign laws may involve delays and legal uncertainties for Singapore investors.
- **You are exposed to risks associated with indirect costs of the swap(s)**
 - Under the swap(s) entered into between the Fund and the swap counterparty, the Fund shall receive the performance of Benchmark Index securities adjusted by indirect costs (such as (a) market value adjustments comprising the hedging activities of the swap counterparty and other costs and/or incidental gain; and (b) tax provisions arising from the hedging activities of the swap counterparty). Such adjustments may affect the ability of the Fund to achieve its investment objective.
- **You are exposed to risks associated with custodians**
 - The Fund's assets are held in custody by the Depository and Custodian. This exposes the Fund to a custody risk.
- **You are exposed to the risk linked to the instruments used by the Fund to gain exposure to emerging markets (market access risk)**
 - As direct investments in some emerging markets may be restricted by the local applicable laws, the Manager has arranged for the Fund to gain exposure to the Benchmark Index by using financial instruments issued by lending institutions.
 - The Manager may, from time to time during the life of the Fund, suspend further subscriptions into the Fund if the Manager cannot gain further exposure to the Benchmark Index (i) at a commercially reasonable cost; (ii) due to quota and/or licensing restriction(s) under the relevant local applicable laws; or (iii) as a result of any orders or directions issued by a regulator.
- **You are exposed to risks associated with potential conflicts of interests**
 - The Manager is a subsidiary of Lyxor Asset Management, which is in turn a wholly-owned subsidiary of Société Générale (which is currently the swap counterparty, designated Market Maker, depository and custodian and the registrar of the Fund).
 - Whilst compliance procedures require effective segregation of duties and responsibilities between the relevant divisions within the Société Générale Group, the possibility of conflicts of interest arising cannot be wholly eliminated. If such conflicts arise, the Manager will, in conjunction with the Depository and Custodian, seek to ensure that Holders are treated fairly, and any such conflicts will be treated on an arm's length basis.

Please refer to the "Conflicts of Interest" section of the Prospectus for further information.

FEES AND CHARGES

WHAT ARE THE FEES AND CHARGES OF THIS INVESTMENT? Payable by you when subscribing or redeeming Units via the Participating Dealer of the Fund:

Subscription fee or preliminary charge	Up to the higher of (i) EUR 50,000 (converted* to USD) per subscription request or (ii) 5% of the NAV per Unit multiplied by the number of Units subscribed.
Redemption or realisation charge	Up to the higher of (i) EUR 50,000 (converted* to USD) per redemption request or (ii) 5% of the NAV per Unit multiplied by the number of Units redeemed.

* You should note that the exchange costs and risks, if any, will be borne by you.

Payable by you when buying or selling Units via the SGX-ST:

For purchases and sales on the SGX-ST: There will be a clearing fee for trading of Units on the SGX-ST which is currently 0.0325% of the transaction value. You will have to bear brokerage fees charged by their stockbrokers as in the case of acquiring or selling shares listed on the SGX-ST. The prevailing GST (7.0%) on brokerage fees and clearing fees will apply. Please contact your broker for further details.

Payable by Class C-USD of the Fund:

Operating and Management fee, tax included	Currently 0.55% of the Fund's NAV per annum; Maximum 0.55% of the Fund's NAV per annum.
--	--

Payable by the Fund when investing in the underlying fund(s) (where applicable):

Subscription fee payable to third parties	Currently nil; Maximum 5.0%.
Redemption or realisation charge	Currently nil.

Payable out of the assets of the underlying fund(s) (where applicable):

Operating and management fee, tax included	Currently nil; Maximum 1.0% of the underlying fund's NAV per annum.
--	--

Please refer to the "Fees and Charges" section of the Prospectus for further information.

CONTACT INFORMATION

HOW DO YOU CONTACT US?

You may contact the Singapore Representative of the Fund, RBC Investor Services Trust Singapore Limited, at 77 Robinson Road, #18-00 Robinson 77, Singapore 068896 or the Manager at telephone number (65) 6423 2638 or fax number (65) 6423 2632 to raise any queries about the Fund.