

# LGIM Euro Liquidity Fund

LGIM Liquidity Funds plc (UCITS compliant) 4-Class EUR Dist

Base currency: **EUR**

Domicile: **Ireland**



## FUND AIM

To provide capital stability and a return in line with money market rates whilst providing daily access to liquidity and providing an income. The Fund seeks to maintain a AAA rating, which is the highest fund rating available.

## FUND SNAPSHOT

- **What does it invest in?** Invests in short-term, euro based assets issued by governments, high quality banks and companies.
- **How does it invest?** Actively managed, investing in deposits, short-term money market instruments that mature within 397 days and have been awarded one of the two highest available short-term credit ratings by each recognised credit rating agency. May also invest in eligible short-term securitisations.
- **Does it promote sustainability characteristics?** The Fund promotes a range of environmental and social characteristics. Further information on how such characteristics are met by the Fund can be found in the Supplement.

## WHO IS THIS FUND FOR?

- The Fund is a short-term money market fund and a low volatility net asset value money market fund as defined in Regulation (EU) 2017/1131 (the MMFR). Therefore, the Fund must comply with the requirements for such funds as outlined in the MMFR, including with regard to its permitted investments and the maturity profile of such investments.
- The Fund may be suitable for investors seeking a lower than average risk with returns slightly higher than cash. This investment is more suitable for medium to long-term investors.
- As a result of periods of low or even negative prevailing money market rates, the Fund may have a net negative yield which would impact the value of your Shares.
- If you do not understand this document we recommend you seek additional information to help you decide if this fund is right for you.

## FUND FACTS

Fund size <b>€3,047.8m</b>	Fund launch date <b>20 Jun 2017</b>
Weighted average final maturity <b>70 days</b>	Weighted average maturity <b>42 days</b>

## COSTS

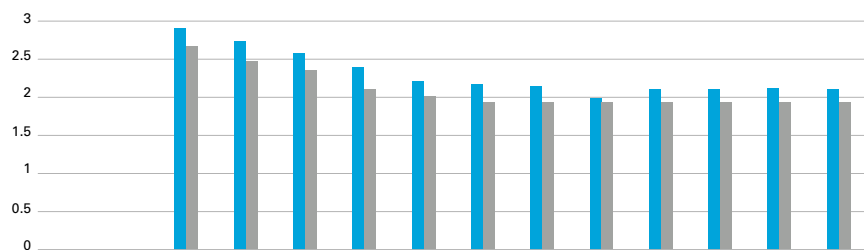
Price basis <b>Single - mid</b>	Ongoing charge <b>0.10%</b>
------------------------------------	--------------------------------

## BENCHMARK

Comparator benchmark  
**Euro Short Term Rate\***

\*The benchmark performance shown below is in EUR for this share class.

## ANNUALISED MONTHLY YIELD PERFORMANCE (%)



	Feb	Mar	Apr	May	Jun	Jul	Aug	Sep	Oct	Nov	Dec	Jan
Fund	2.91	2.73	2.58	2.39	2.21	2.17	2.14	1.99	2.11	2.10	2.11	2.11
Benchmark	2.68	2.47	2.35	2.10	2.02	1.93	1.93	1.93	1.94	1.94	1.94	1.94
Relative	+0.23	+0.26	+0.23	+0.29	+0.19	+0.24	+0.21	+0.06	+0.17	+0.16	+0.17	+0.17

Performance for the 4 share class in EUR, launched on 19 December 2023. Source: L&G. Performance is gross of fees and assumes that all income generated by the investments, before deduction of tax, remains in the fund.

### Past performance is not a guide to the future.

Fund returns shown are based on prices as at the last fund trading day for the month. Due to bank holidays this may impact relative performance to any benchmarks which are priced on a bank holiday which falls within a month but after the last fund trading day for that month.

## FUND RATINGS

In addition to L&G's risk management oversight, the Fund is rated by the following agencies:

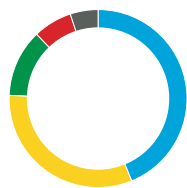
S&P	AAAm
Moody's	Aaa-mf
Fitch	AAAmmf

The fund ratings were solicited and financed by LGIM Liquidity Funds Plc.



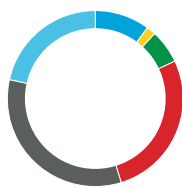
## PORTFOLIO BREAKDOWN

All data source L&G unless otherwise stated. Totals may not sum due to rounding.



### ASSET (%)

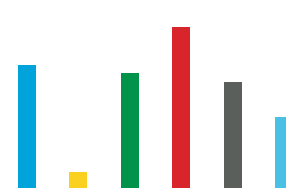
Certificate of Deposit	43.8
Commercial Paper	31.7
Deposit (Overnight)	12.3
Floating Rate Notes	7.1
Repurchase Agreement	5.1



### CREDIT RATING (%)

AAA	10.1
AA+	1.7
AA	6.2
AA-	27.2
A+	33.2
A	21.5

Source: Standard & Poor's



### DAYSTO MATURITY (%)

Overnight	20.7
2 to 7 days	2.7
7 days to 1 month	19.4
1 to 3 months	27.2
3 to 6 months	17.9
6 to 12 months	12.1

### COUNTRY (%)

Japan	16.1
Germany	12.8
France	12.1
Belgium	8.4
Netherlands	8.4
Australia	6.9
United States	6.5
Finland	5.7
Canada	5.2
Other	17.8

### TOP 10 ISSUERS (%)

Bank of Tokyo Mitsubishi UFJ	6.4
Germany Treasury*	4.9
KBC Bank	4.9
Sumitomo Mitsui Banking Corp	4.3
NRW.BANK	4.1
Nordea Bank	3.6
Belfius Bank	3.3
BRED Banque Populaire	3.3
Kingdom of the Netherlands	3.3
Lloyds Banking Group	3.0

\*Includes reverse repurchase agreements collateralised with Germany Treasury issuance.

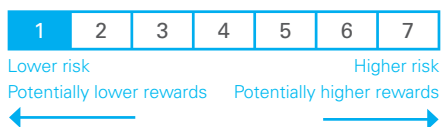
## LIQUIDITY FUNDS

For the L&G Liquidity Funds the macroeconomic outlook acts as an anchor to portfolio construction. Fundamental credit research, focused on the evolution of credit quality, provides a universe of permitted issuers. While investment and operational risk management oversight ensures consistency with portfolio objectives.

### LIQUIDITY MANAGEMENT

Liquidity Management (within Global Trading and Liquidity) forms a strategic part of our asset management capability incorporating liquidity and short duration portfolios as well as securities financing.

RISK AND REWARD PROFILE



The summary risk indicator is a guide to the level of risk of this product compared to other products. It shows how likely it is that the product will lose money because of movements in the markets or because we are not able to pay you. We have classified this product as class 1 out of 7, which is the lowest risk class. This product does not include any protection from future market performance so you could lose some or all of your investment. **Be aware of currency risk.** You may receive payments in a different currency, so the final return you will get depend on the exchange rate between the two currencies. This risk is not considered in the indicator shown above. The Fund is not covered by an investor compensation scheme. The value of the fund may be affected by risks not in the SRI: failure of a counterparty, custodian or issuer; derivative use; inability to sell holdings; trends in interest rates/inflation.

KEY RISKS

- The value of an investment and any income taken from it is not guaranteed and can go down as well as up; you may not get back the amount you originally invested.
- This fund holds bonds that are traded through agents, brokers or investment banks matching buyers and sellers. This makes the bonds less easy to buy and sell than investments traded on an exchange. In exceptional circumstances the fund may not be able to sell bonds and may defer withdrawals, or suspend dealing. The Directors can only delay paying out if it is in the interests of all investors and with the permission of the fund depositary.
- The fund invests directly or indirectly in bonds which are issued by companies or governments. If these companies or governments experience financial difficulty, they may be unable to pay back some or all of the interest, original investment or other payments that they owe. If this happens, the value of the fund may fall.
- The fund could lose money if any institution providing services such as acting as counterparty to derivatives or other instruments, becomes unwilling or unable to meet its obligations to the fund.
- Shares in the fund are not the same as deposits. The amount invested in the fund may fluctuate up or down and you bear the risk of any loss of investment. The fund is not protected by any national deposit protection scheme.
- Investment returns on bonds are sensitive to trends in interest rate movements. Such changes will affect the value of your investment.

For more information, please refer to the key information document on our website [↗](#)

CODES

Institutional	OCF (%)	Min. Investment	ISIN	Bloomberg
Class 4	0.1	€ 20,000,000	IE000PK54TF3	LGIMKJA ID



SPOTLIGHT ON LEGAL & GENERAL

L&G’s asset management division is a major global investor across public and private markets, with €1,300.9 billion in assets under management (as at 30 June, 2025). Our investment philosophy and processes are designed to create value over the long term. We believe that incorporating financially material sustainability criteria, when relevant to our clients, can create attractive returns and drive positive change.

Source: L&G internal data as at 30 June 2025. The AUM disclosed aggregates the assets managed by L&G in the UK, LGIMA in the US and L&G Asia in Hong Kong (2018-2019 only). The AUM includes the value of securities and derivatives positions.

DEALING INFORMATION

Valuation frequency	Daily, 13:00 Irish time
Dealing frequency	Each Business Day
Settlement period	T+0

COUNTRY REGISTRATION

- Germany
- Ireland
- Italy
- Luxembourg
- Netherlands
- United Kingdom

**TO FIND OUT MORE**



Call **+44 (0)203 124 3155**



Visit **www.lgim.com**

We may record and monitor calls. Call charges will vary.

**Important information**

A copy of the English version of the prospectus of the Fund is available on LGIM Fund Centre and may also be obtained from Legal & General Investment Management, 2 Dublin Landings, Office 1-W-131, North Dock, Dublin 1, Ireland. Where required under national rules, the key information document will also be available in the local language of the relevant EEA Member State. A summary of investor rights associated with an investment in the Fund shall be available from [www.lgim.com/investor\\_rights](http://www.lgim.com/investor_rights)

We are also obliged to disclose that the Management Company has the right to terminate the arrangements made for marketing.

A decision may be taken at any time to terminate the arrangements made for the marketing of the Fund in any EEA Member State in which it is currently marketed. In such circumstances, Shareholders in the affected EEA Member State will be notified of this decision and will be provided with the opportunity to redeem their shareholding in the Fund free of any charges or deductions for at least 30 working days from the date of such notification.

This is a marketing communication. Please refer to the prospectus of the Fund and to the KID before making any final investment decisions.

Copyright © 2026 Legal & General. This document is subject to copyright. Any unauthorised use is strictly prohibited. All rights are reserved.

Issued by LGIM Managers (Europe) Limited, authorised by the Central Bank of Ireland as a UCITS management company (pursuant to European Communities (Undertakings for Collective Investment in Transferable Securities) Regulations, 2011 (S.I. No. 352 of 2011), as amended) and as an alternative investment fund manager with “top up” permissions which enable the firm to carry out certain additional MiFID investment services (pursuant to the European Union (Alternative Investment Fund Managers) Regulations 2013 (S.I. No. 257 of 2013), as amended). Registered in Ireland with the Companies Registration Office (No. 609677). Registered Office: 70 Sir John Rogerson’s Quay, Dublin, 2, Ireland. Regulated by the Central Bank of Ireland (No. C173733). We are a member of the Irish Funds Association. All features described in this factsheet are those current at the time of publication and may be changed in the future. Nothing in this factsheet should be construed as advice and it is therefore not a recommendation to buy or sell securities. If in doubt about the suitability of this product, you should seek professional advice. No investment decisions should be made without first reviewing the key information document of the Fund (“KID”) which can be obtained from [www.lgim.com](http://www.lgim.com). This factsheet is only directed at investors resident in jurisdictions where this fund is registered for sale. It is not an offer or invitation to persons outside of those jurisdictions. We reserve the right to reject any applications from outside of such jurisdictions.

Copyright 2026, S&P Global Market Intelligence. Reproduction of any information, data or material, including ratings (“Content”) in any form is prohibited except with the prior written permission of the relevant party. Such party, its affiliates and suppliers (“Content Providers”) do not guarantee the accuracy, adequacy, completeness, timeliness or availability of any Content and are not responsible for any errors or omissions (negligent or otherwise), regardless of the cause, or for the results obtained from the use of such Content. In no event shall Content Providers be liable for any damages, costs, expenses, legal fees, or losses (including lost income or lost profit and opportunity costs) in connection with any use of the Content. A reference to a particular investment or security, a rating or any observation concerning an investment that is part of the Content is not a recommendation to buy, sell or hold such investment or security, does not address the suitability of an investment or security and should not be relied on as investment advice. Credit ratings are statements of opinions and are not statements of fact.

**Internal Fund Code: 9001**